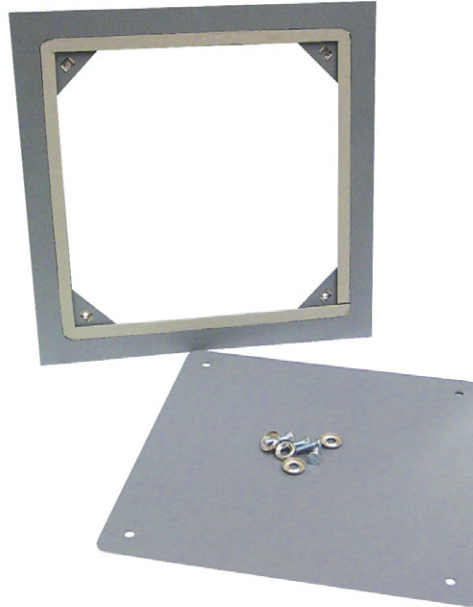


WSR Series



Weather Strip Removable Access Doors

Weather Strip Removable Access Doors are designed with flush gaskets between the panel and frame to ensure flush air seal in all types of walls and ceilings. *Note: Door has **NOT** been tested for air tightness.*

Door and Frame shall be 16 gage galvanized steel with a prime coat finish.

Frame is a one piece construction 1" wide and produces perfect concealment of the rough wall openings. Wall frame is provided with 1/4" mounting holes for fastening within the furred spaces allowing faster installation and giving maximum clearance

Door is fully removable and held in place by multiple latches.

Latch is a screwdriver operated.

Finish is a prime coat suitable for painting.

Guide Specification

Provide Elmdor WSR series, Weather Strip Removable access door (specify model number and options). Access door and frame shall be gasketed between the panel and frame to ensure flush air seal in all types of walls and ceilings. Access door and frame shall be fabricated from 16 gage, galvanized steel with a prime coat finish. The door shall have rounded safety corners. Frame shall be one piece construction with no mitres or welds on the face. Latch shall be screwdriver operated. Finish shall be a prime coat suitable for painting.



MODEL NUMBER AND OPTIONS SELECTION

BASE MODEL NUMBER

- WSR Weather Strip Removable Access Door

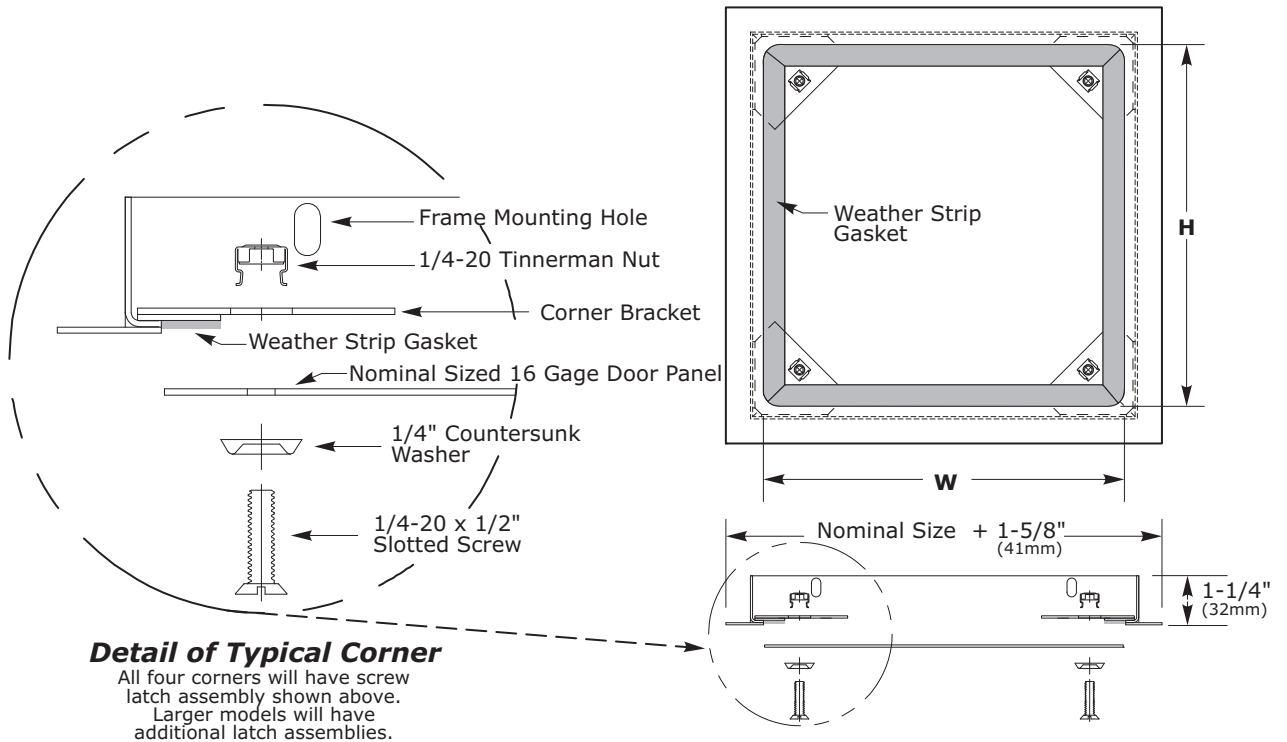
Suffix Options

- AKL Allen Key Latch
- CL Cylinder Lock
- SS Stainless Steel Construction. (Type 304 No 4 Finish Satin Finish)
- TH 'T' Handle

STANDARD AVAILABLE SIZES

Special sizes available upon request.

NOMINAL DOOR SIZE (W x H)	WALL OPENING	LATCHES	WEIGHT
WSR 8" x 8"	8-1/2" x 8-1/2"	4	3.0 lbs.
WSR 10" x 10"	10-1/2" x 10-1/2"	4	4.0 lbs.
WSR 12" x 12"	12-1/2" x 12-1/2"	4	5.5 lbs.
WSR 14" x 14"	14-1/2" x 14-1/2"	4	6.0 lbs.
WSR 16" x 16"	16-1/2" x 16-1/2"	4	7.5 lbs.
WSR 18" x 18"	18-1/2" x 18-1/2"	8	9.0 lbs.
WSR 24" x 24"	24-1/2" x 24-1/2"	8	15.0 lbs.



Dimensions are subject to manufacturer's tolerance of plus or minus 1/4". Elmdor/Stoneman assumes no responsibility for use of void or suspended data. Please visit www.elmdorstoneman.com for most current specifications. © Copyright 2009 Elmdor/Stoneman, City of Industry, CA, A Division of Acorn Engineering Company.

SELECTION SUMMARY & APPROVAL FOR MANUFACTURING	
Model Number & Options _____	Quantity _____
Company _____	Date _____
Contact _____	Title _____
Approval for Manufacturing/Signature _____	

WSR

Revised: 3/24/09